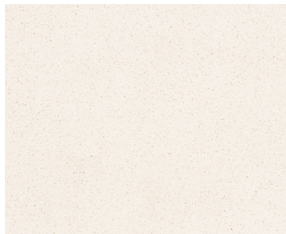
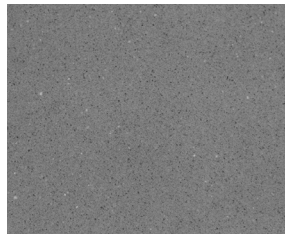




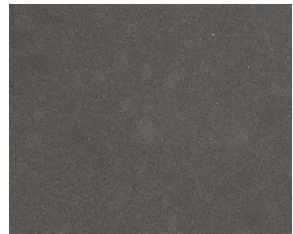
 Also available in Jumbo size



BQ400 - **Silver White**



BS250 - **Twilight Grey**



BS124 - **Satinet**



BQ1080 - **Crystal Ice**



BQ982 - **Castelo**



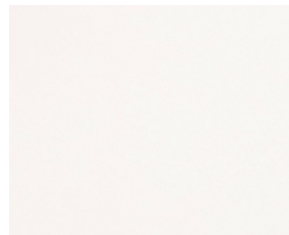
Also available in Jumbo size



BQ2609 - **Ceres**



BQ2600 - **Valley White**



BQ200 - **Artic Snow**

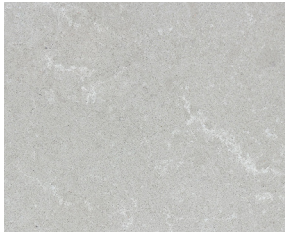


BQ8437 - **Jura Grey**

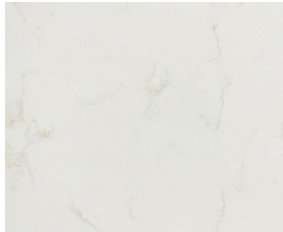


BQ2088 - **Onyx White**

 Also available in Jumbo size



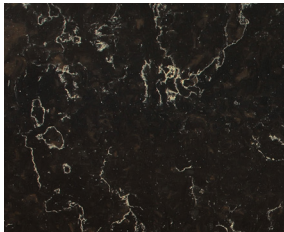
BQ8446 - **Grey Savoie** 



BQ8220 - **Carrara** 



BQ8330 - **Ventisca** 



BQ8812 - **Java Noir**



BQ8805 - **Cendre**

 Also available in Jumbo size



BQ8780 - **Argento**



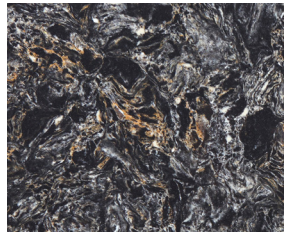
BQ9418 - **Serra**



BQ8668 - **IceLake**



BQ9470 - **Azul Aran**

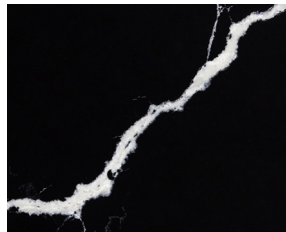


BQ9427 - **Cosmic Black**

 Also available in Jumbo size



BQ8738 - **Greylac**



BQ8740 - **Nero Marquina**



BQ8788 - **Diamante**



BQ8628 - **Statuario**



BQ9606 - **Avorio**

TECHNICAL SPECIFICATIONS

SPECIFICATIONS	TEST METHOD	RESULT
Water Absorption (%) by weight)	ASTM C139/C137M-09-2009	≤ 0.05%
	EN 14617-1:2013	≤ 0.06%
Apparent Density	ASTM C139/C137M-09-2009	2.2 – 2.4 g/cm ³
	EN 14617-1:2013	
Flexural Strength	ASTM C188/C180M-09-2009	> 40 MPa
Dimension Stability	EN 14617-2:2008	Class A
	EN 14617-12:2012	
Electrical Stability	EN 14617-13:2013	Volume resistance (K _v) ≥ 10 ¹⁴ Ω·cm ³ Volume resistance (K _v) ≥ 4.88 × 10 ¹² Ω·cm ³
	ASTM D1709-2015	
Impact Resistance	EN 14617-9:2006	≥ 3.0 J
	EN 14617-10:2012	
Compressive Strength	ASTM C170/C170M-09-2009	≥ 155 MPa
	EN 14617-15:2005	
Mohs Scale of Hardness	EN001	6.0 – 7.0
Resistance to Deep Abrasion	ASTM C1243-2009	Volume of chert: V ≤ 195mm ³
	EN 14617-4:2012	
Freeze-Thaw Resistance	ASTM C1026-2013	No defects after 15 freeze-thaw cycles)
	EN 14617-5:2012	
Slip Resistance at Wet Road	EN 15120:2004	R0 – R10
Microbial Resistance	ASTM D 6329-2015	Ranking 3: Resistant to Mold Growth
Chemical Resistance to Acids	EN 14617-10:2012	Class C ₁
Thermal Shock Resistance	EN 14617-6:2012	No visual defects after 20 cycles
Determination of Resistance to Immersion in Boiling Water	AS 2924.3-7: 1998 (EQUL TO ISO 4086.2-7: 1997)	Effect on surface (rating) 5 (no visible change)
Determination of Resistance to Dry Heat	AS 2924.3-8: 1998 (EQUL TO ISO 4086.3-8: 1997)	Effect on surface (rating) 5 (no visible change)
Determination of Resistance to Varying (Procedure A)	AS 2924.3-15: 1998 (EQUL TO ISO 4086.3-15: 1997)	Effect on surface (rating) 5 (no visible change)

PRODUCT INFORMATION

SLAB DIMENSIONS:

Standard size: 56" x 120"

Jumbo size: 65" x 130"

HIGH GLOSS SURFACES

THICKNESS	SLAB WEIGHT	KG/M ²	LBS/SF
2.0 cm	198 - 206 kg	50 kg/m ²	10.24 lb/sf
3.0 cm	299 - 310 kg	75 kg/m ²	15.36 lb/sf

MATERIALS COMPARISON

MATERIALS	QUARTZ	GRANITE	LAMINATE	SOLID SURFACE
Scratch Resistance	***	***	**	*
Stain Resistance	***	**	**	***
Chip and Crack Resistance	***	**	**	***
Heat and Burn Resistance	**	**	**	**
Resistance to Household Chemicals Acids and Solvents	***	**	**	***
Low Maintenance	***	**	**	*
Non-absorbency and Non-porosity	***	**	**	**
Mold and Mildew Resistance	***	**	**	**
Flexural Strength	***	**	**	**
Color Consistency	***	*	***	***
Immunity to Freeze and Thaw	***	***	*	*

KEY	***	Excellent
	**	Good
	*	Fair



CE, NSF, Declare. Microbial Resistance ASTM D 6329-98



EASED

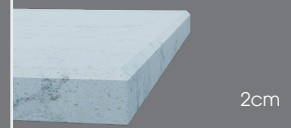


2cm



3cm

MICRO BEVEL

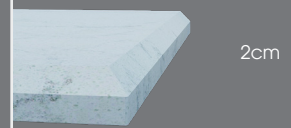


2cm

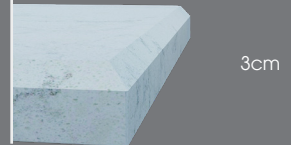


3cm

SINGLE BEVEL



2cm





3cm



VICOSTONE CANADA INC.

Website: www.vicostone.ca

Email: info@vicostone.ca

Follow us  

TORONTO

341 Edgeley Blvd, Vaughan,
ON L4K 3Y2
Office: 905 760 7888
Fax: 905 760 0388

MONTREAL

1909 Onésime Gagnon Street,
Lachine, QC H8T 3M5
Office: 514 633 8886
Fax: 514 633 8828

VANCOUVER

1551 Broadway Street, Suite 106,
Port Coquitlam, BC V3C 6N9
Office: 604 949 3046
Fax: 604 469 5745

CALGARY

Unit 185, 8610 36 St NE,
Calgary, AB T3J 2E1
Office: 587 467 1177
Fax: 587 467 1212